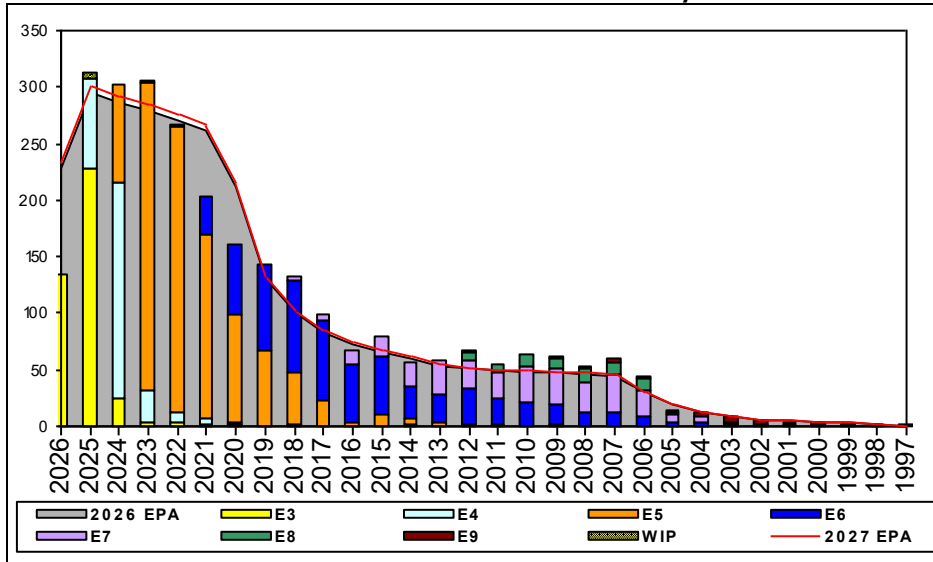
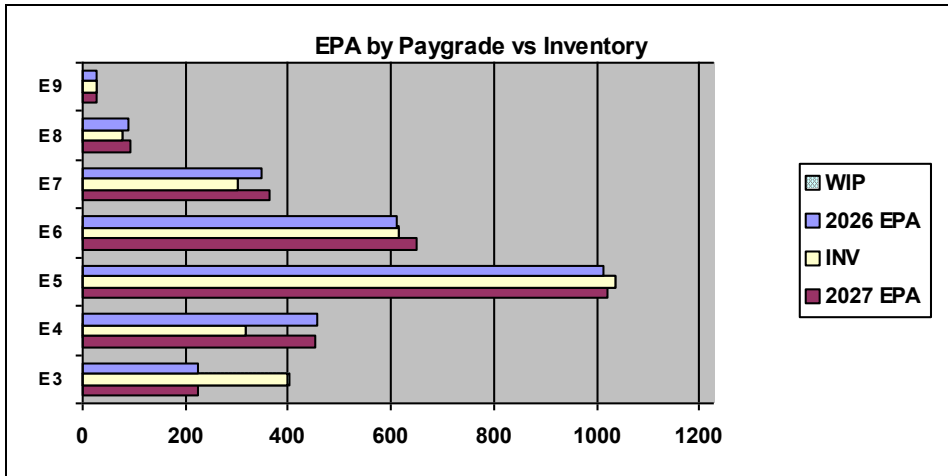


Cyber Warfare Technician - B525



Sea Shore Flow			FORCE STRUCTURE MANNING TO BA									
TOUR	SEA	SHORE	PG	SEA	INV	BA	SHORE	INV	BA	SEA + SHORE	TOTAL INV	TOTAL BA
1ST			E1-3	#Div/0!	2		120.0%	66	55	123.6%	68	55
2ND			E4	200.0%	6	3	55.9%	238	426	56.9%	244	429
3RD			E5	46.7%	28	60	113.4%	949	837	108.9%	977	897
4TH			E6	90.8%	69	76	102.2%	516	505	100.7%	585	581
5TH			E7	84.4%	54	64	90.0%	242	269	88.9%	296	333
6TH			E8	81.8%	9	11	87.2%	68	78	86.5%	77	89
7TH			E9	0.0%		1	100.0%	27	27	96.4%	27	28
			Total	78.1%	168	215	95.9%	2106	2197	94.3%	2274	2412

TIS to PG Years	Pay Grade	E1-E3	E4	E5	E6	E7	E8	E9
ALL Navy	TIS		2.2	4.0	8.7	13.8	17.8	21.7
	CWT		1.4	2.6	7.4	12.7	16.2	19.9
TIG to PG Years	ALL Navy		1.3	1.8	4.6	5.7	5.0	4.6
	CWT		0.9	1.3	4.1	5.2	5.2	4.2



Zone Info	ZONE A	ZONE B	ZONE C	ZONE D	ZONE E	ALL ZONES
FY26 Manning:	100.0%	91.0%	104.0%	121.0%	83.0%	100.0%
FYTD RENL Rate:	76.3%	53.9%	79.2%	96.3%	15.1%	67.4%

NOTES

*** CWT TOTAL STRENGTH 100% with FORCE STRUCTURE 94% ***
RATING IS FULLY-MANNED!

** Commands should submit their Sailors for proficiency NECs upon completion of requirements as per the NEOCS manual. Do not wait, this will potentially cause issues when submitting Sailors for SRB or other incentives.

** The CWT MyNavyHR page has been updated to include professional development resources, community notes, and point of contact information for Detailers and ECMs.

** ECM is allowing limited conversions to IW / NSW ratings and interservice transfers for Zone-A.

** Rating conversions will be considered on a case-by-case basis. Ensure you qualify before applying -- See MyNavyHR CWT community page
- CLEARANCE REQUIREMENTS NECESSITATE ALL CONVERSIONS
- ASVAB: GS+AR+2(MK) >= 239 or AR+MK+MC+VE >= 239 or MK+CT+VE >= 176

** For any questions or concerns, please contact the CWT Community Manager
[EMAIL] shawn.a.duncan.mil@us.navy.mil

	E1-3	E4	E5	E6	E7	E8	E9	TOTAL
% INV to FY26 EPA	176%	69%	102%	101%	86%	89%	93%	100%
EPA (FY26)	226	457	1015	610	350	88	29	2775
INVENTORY	398	317	1037	615	302	78	27	2774
EPA (FY27)	224	452	1021	649	363	91	29	2829
% INV to FY27 EPA	178%	70%	102%	95%	83%	86%	93%	98%
INV + WIP / FY26 EPA	178%							100%
INVENTORY	402	4 ← E-3 and Below WIP						2778
INV + WIP / FY26 EPA	179%							98%